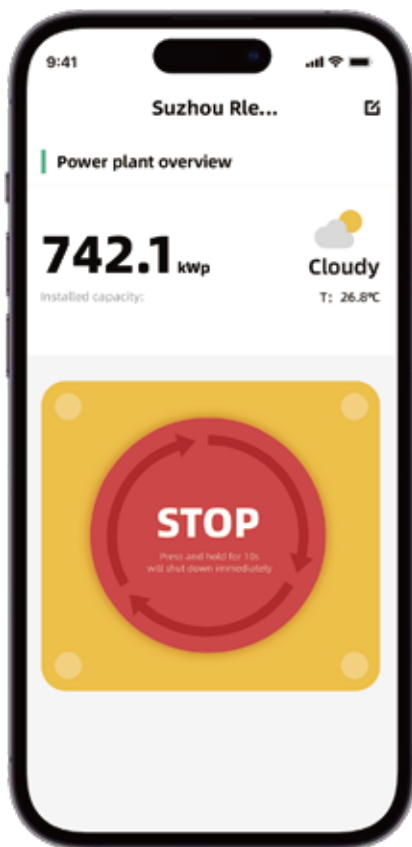
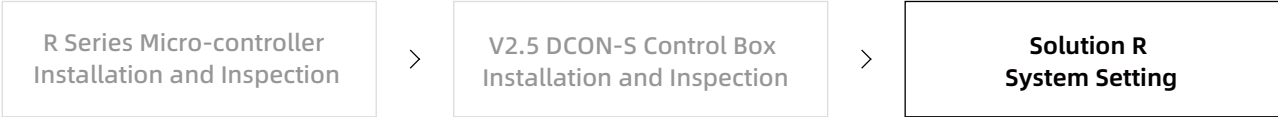


ACLOUD Smart Platform System Setting Guide

Solution R



V2.5 Control Solution (Solution R) Installation and Inspection Process



Note: During all operations below, high voltage risks exist at the DC terminal of the PV system when the V2.5 Control Box (Hereinafter referred to as the Control Box) is powered on. Ensure proper safety precautions are taken.

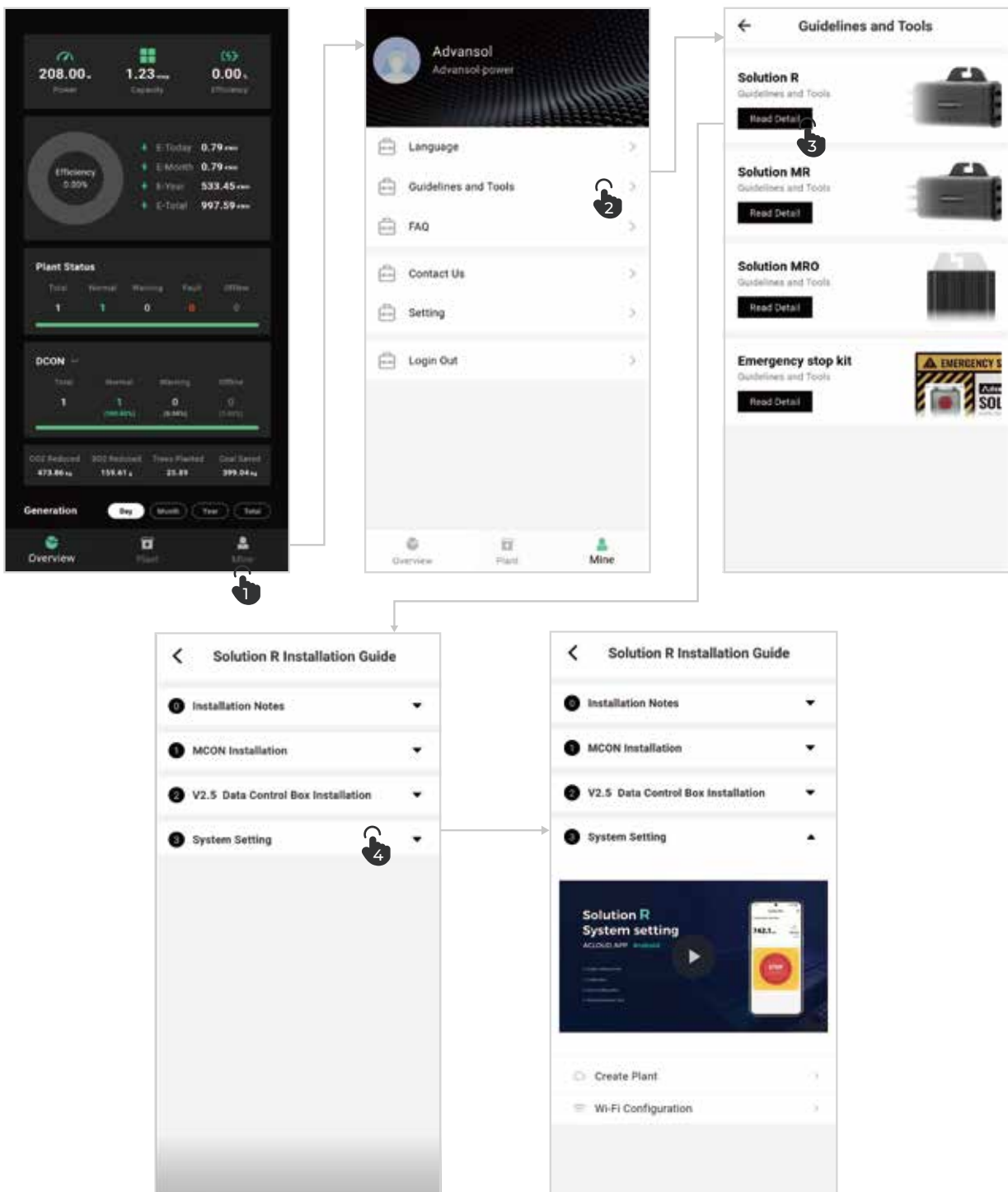
1. System Debugging Entry

1



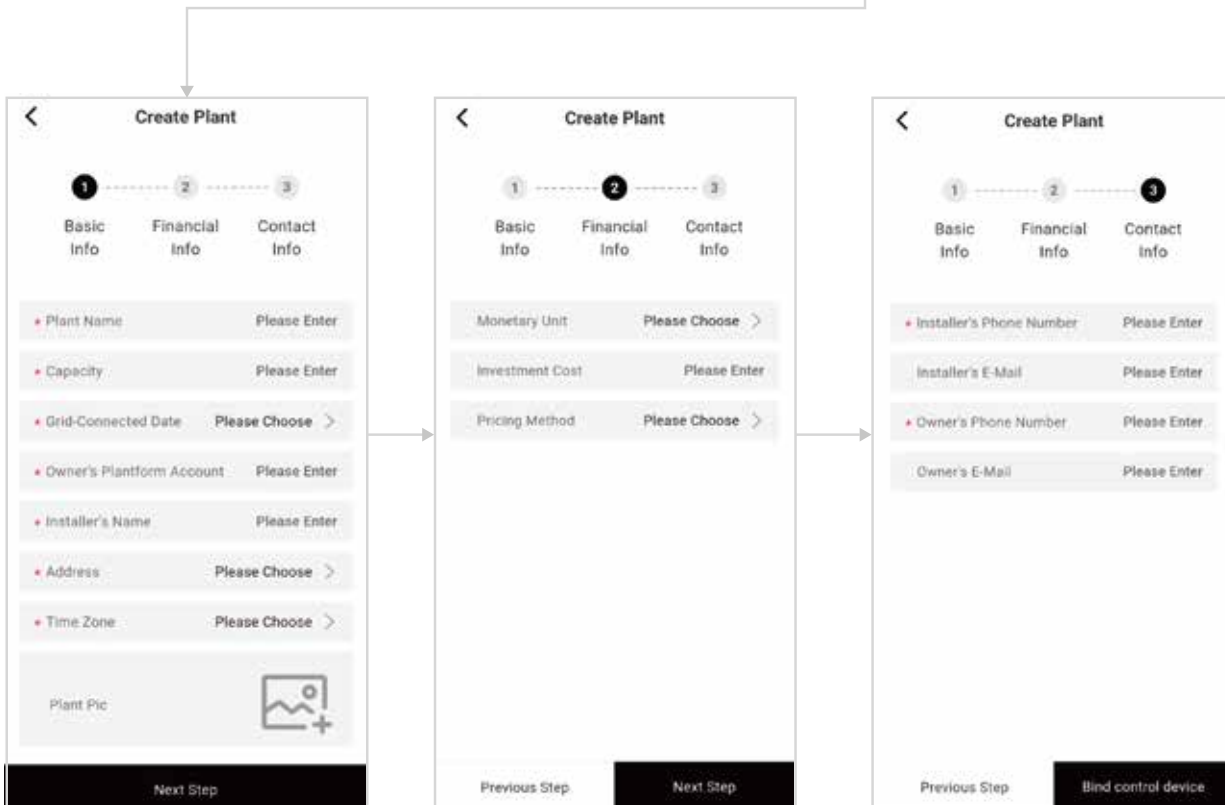
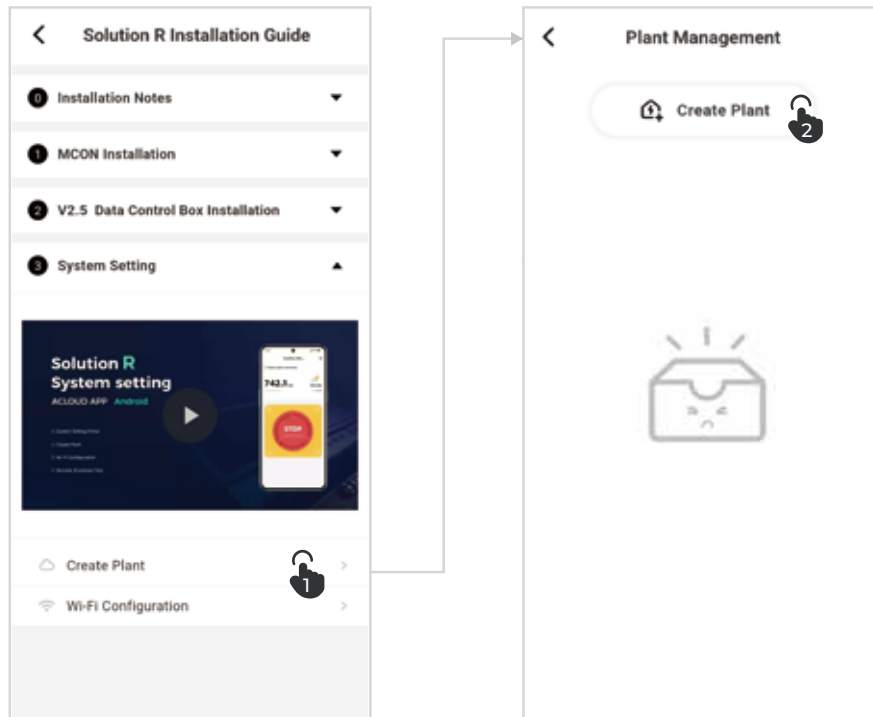
Scan the QR code on the left to download and install the AdvanSol Acloud APP; and register as an Acloud user.

2 After logging into the APP, navigate to: Mine-Guidelines and Tools-Solution R-System Debugging, to perform Acloud Station Setup and WiFi Connectivity operations (follow the sequence).

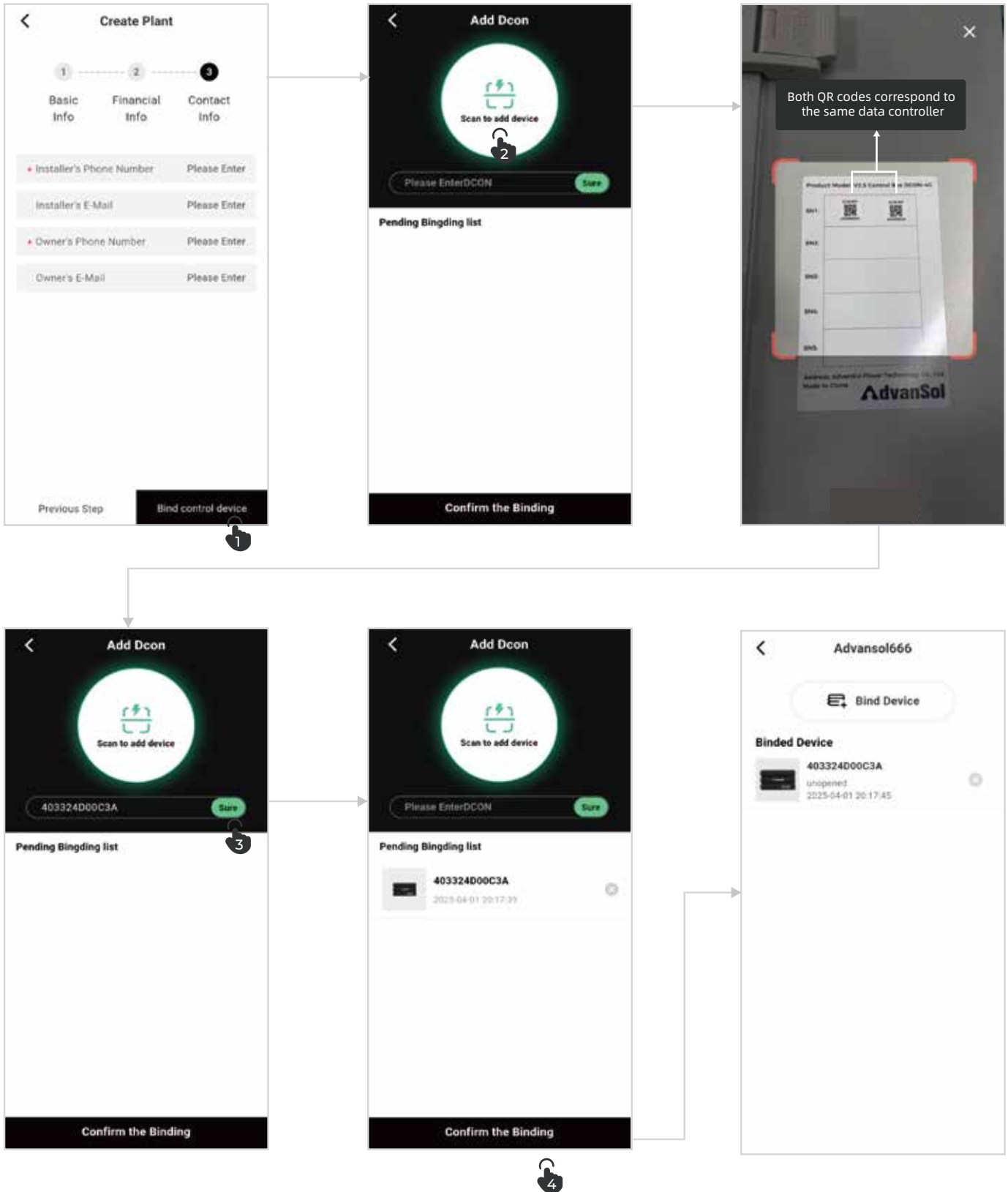


2. Acloud Station Setup

- 1 Click ***New Station*** to begin the setup process. And fill in the station's basic information, financial details, and contact information as prompted.;

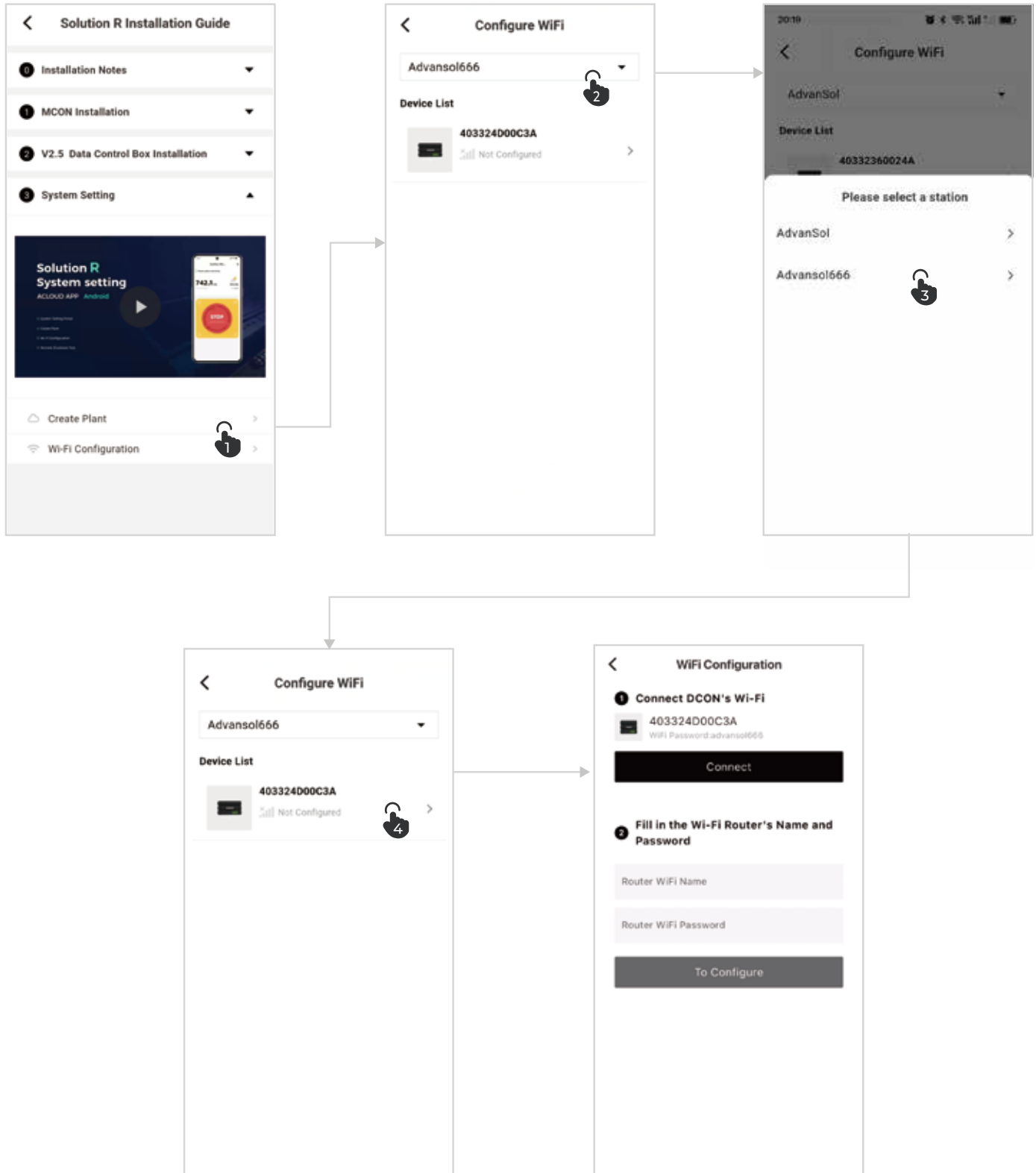


- 2 Click ***Bind Control Devices*** to enter the Data Controller binding page. Select ***Scan to Add Device*** and scan the SN QR code on the side of the Control Box. Verify the SN number matches the actual device, then click ***Confirm*** to add it to the device list. Repeat steps to add all Data Controllers in the station.
- 3 Click ***Confirm Binding*** to finalize.

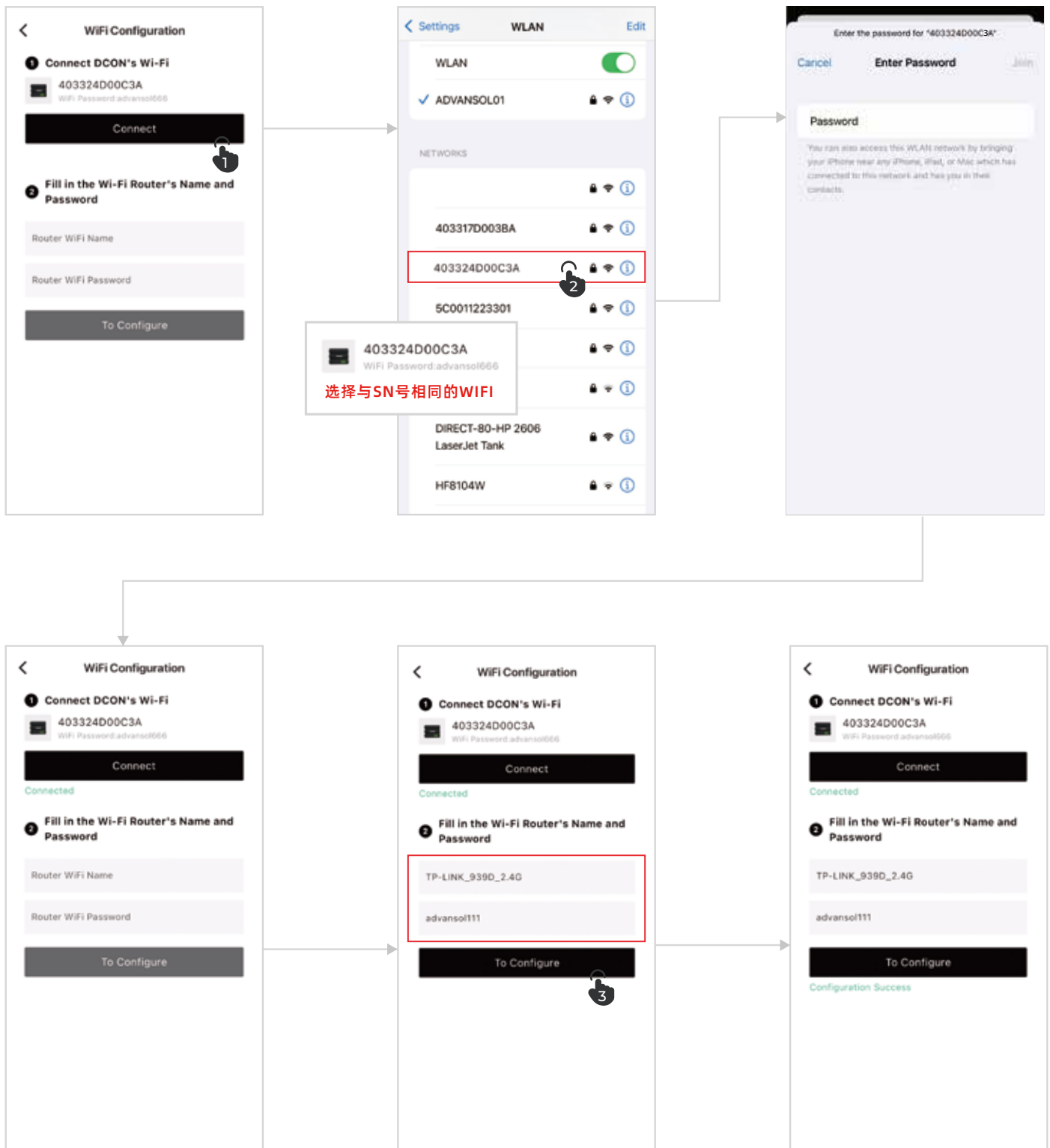


3. WIFI Connectivity(IOS System)

- 1 Click *WiFi Connectivity* and select the target station from the dropdown.
- 2 Choose the Data Controller to configure from the device list.

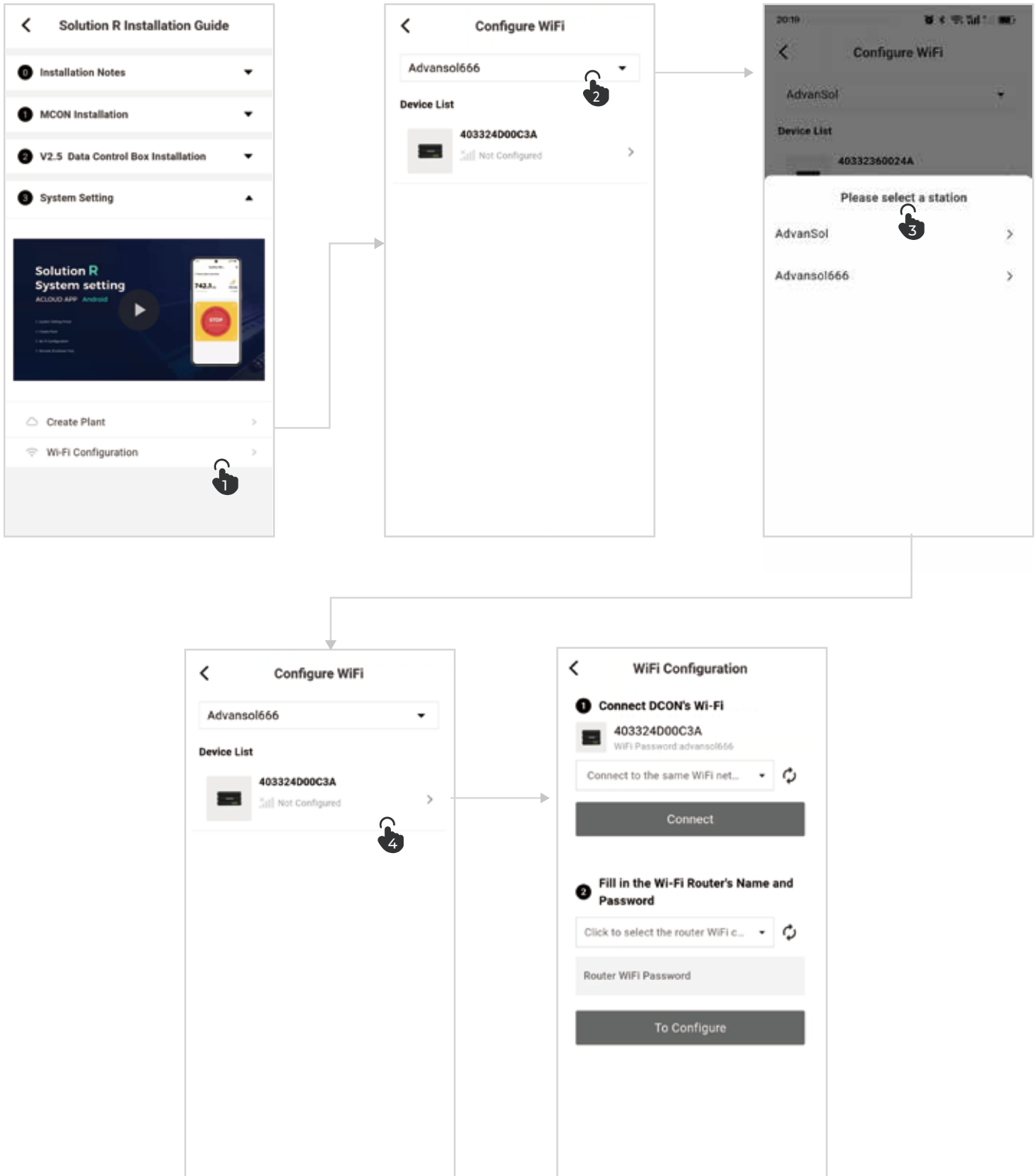


- 3 Connect to the Data Controller's WiFi (name matches SN) using password: advansol666.
- 4 Enter the router's WiFi name and password.
- 5 Click *Configure* and wait up to 45 seconds for confirmation.
- 6 Repeat for all Data Controllers in the station.

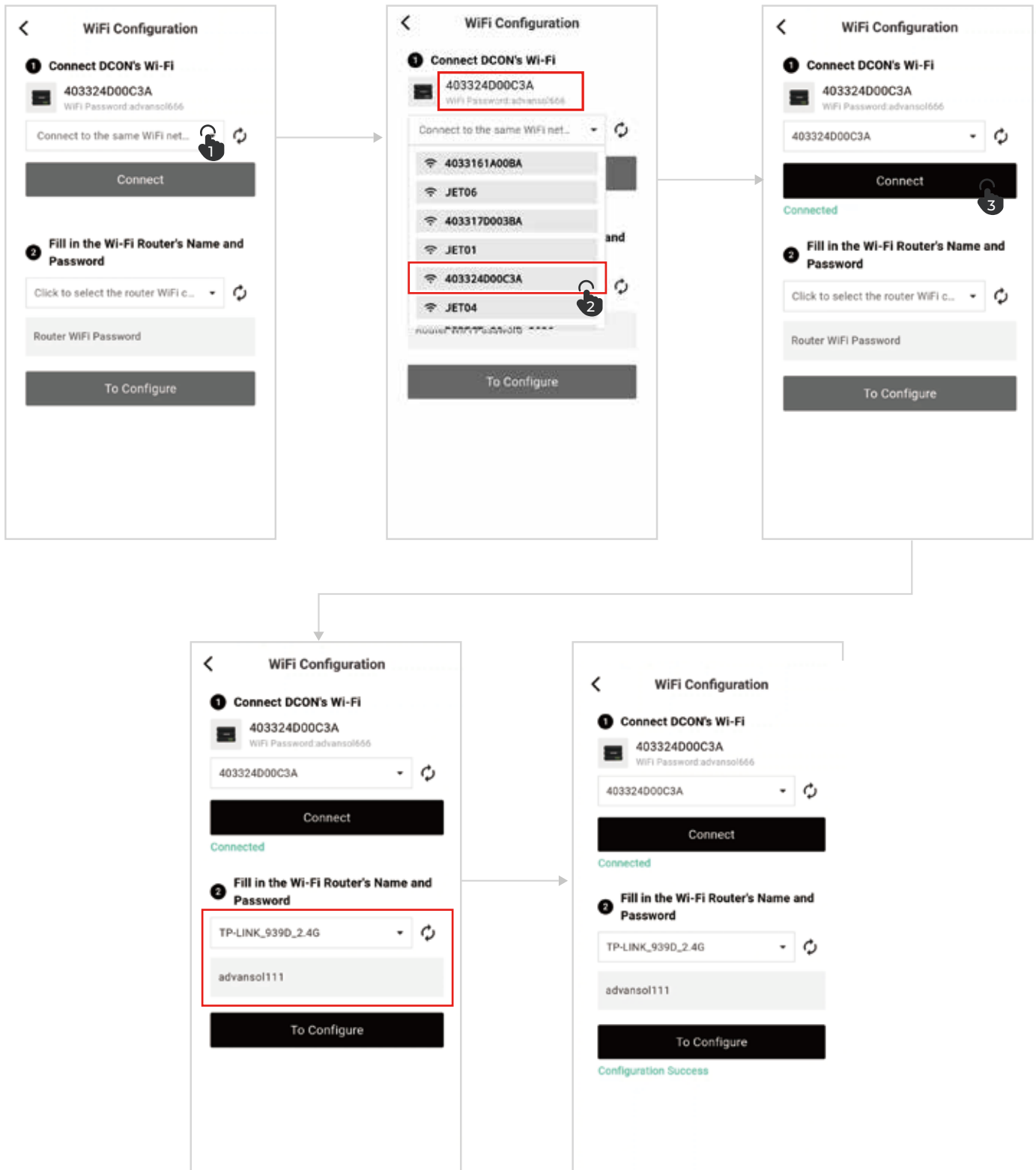


4. WIFI Connectivity(Android system)

- 1 Click *WiFi Connectivity* and select the target station from the dropdown.
- 2 Choose the Data Controller to configure from the device list.



- 3 Connect to the Data Controller's WiFi (name matches SN) using password: advansol666.
- 4 Enter the router's WiFi name and password.
- 5 Click *Configure* and wait up to 45 seconds for confirmation.
- 6 Repeat for all Data Controllers in the station.

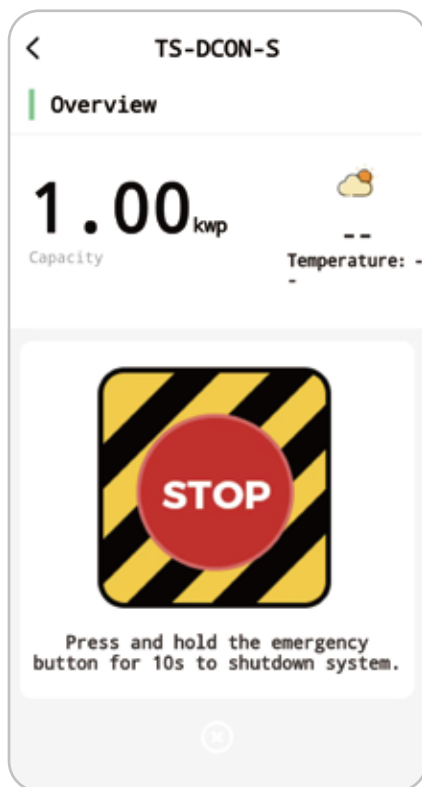


5. Remote Shutdown Test

Notes: During testing, ensure the inverter is grid-connected (DC/AC active).
If not, postpone testing until grid connection.

- 1 Confirm the Control Box is powered on (breaker closed).
Open the Acloud APP, select Stations > target station.

2



APP Rapid Shutdown

Press and hold the red STOP button for 10 seconds.
And use a clamp meter to verify the current of each DC string under the control box drop to ~0A within 30 seconds.
After this, the button will become a green RESET button.

APP Reset

Press and hold the green RESET button for 10 seconds.
And use a clamp meter to verify the current of each DC string under the control box return to normal within 30 seconds.
After this, the button will become a red STOP button.



Rapid shutdown

Click to shutdown the system within 30s



Reset

Click to resume the system



Offline

The system is offline due to the lack of power of the control box or weak signal

Notes: If the system is not grid-connected, keep the Data Control Box powered off.
For abnormalities, immediately shut down the inverter's DC terminal,
power off the Data Control Box, and contact AdvanSol support.

6. Contact us

If you have any technical questions on AdvanSol products, or need other language files, please contact us for help.

AdvanSol Power Technology Co.,Ltd

8 Floor, Building 2, 36 Zijing Street, Wuzhong District,
Suzhou City, China

☎ +86-512-662352

🌐 www.advansol-power.com

✉ service@advansol-power.com



Friendly reminder: Please scan the QR code to access versions in other languages.